

# Technology Consulting for the life of your patients

Technology Infrastructure Services that deliver results where they matter most.



**Archi-Technology**  
Technology Consultants LLC

Connecting People, Technology & Buildings





Take control of your healthcare technology every step of the way.

**Data infrastructure capacity. Technology life cycles. Accurate long-term budgeting.**

These are just some of the many issues confronting executives, administrators, and IT professionals in the effective, efficient integration of technology systems into healthcare facilities.

If your organization could use an objective, experienced guide to strategically navigate through the maze of technology projects, funding sources and deployment details, talk to Archi-Technology.

As specialists in technology infrastructure and IP-connected, facility-based systems for more than 20 years, we work with staff, architects, engineers, construction managers, and contractors to meet your healthcare organization's short- and long-term goals.

Our plan-to-manage project approach takes a holistic view of the total life span of your buildings, not just the Design and Build phases. Services of special interest by building phase include:



**PLAN**

A **Comprehensive Technology Plan**, which aligns current and new technology projects with your organization's long-term goals. Funding sources, timelines and estimates are identified to produce a 10-year roadmap that everyone can follow.



**DESIGN**

Based on more than 20 years experience, the firm's **Technology Systems Design** services provide accurate design and construction documents using Technology T-Series drawings that efficiently illustrate the locations of related system components.



**BUILD**

**Technology Construction Management** services bridge the gap between design and construction, by coordinating and overseeing all construction activities related to technology infrastructure and other facility-based IP-connected systems.



**MANAGE**

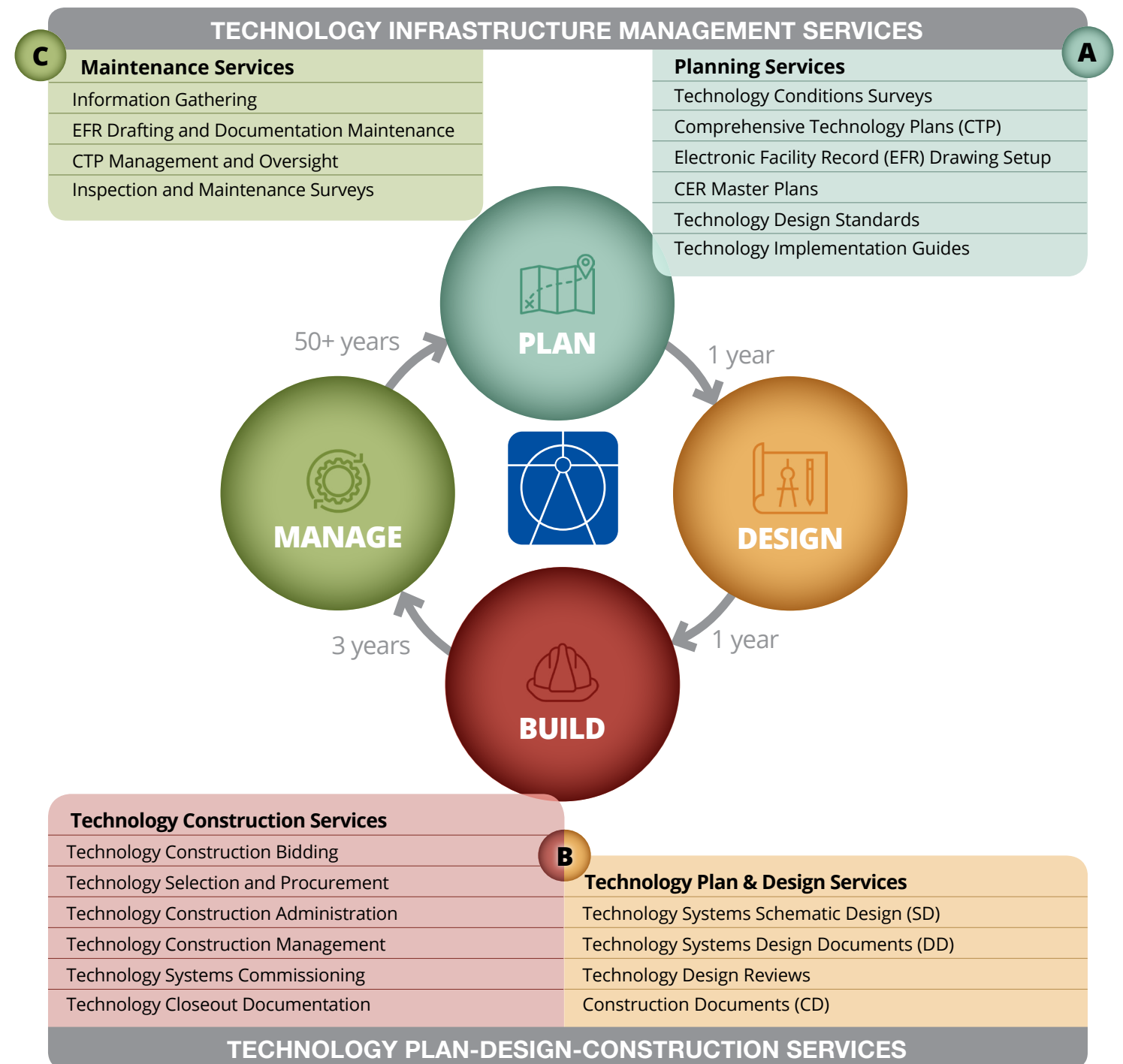
**Drafting and Documentation Maintenance** services provide a turnkey affordable resource to ensure all identified Moves/Adds/Changes are fully documented, to maximize system uptime and reduce service call frequency, duration and cost.

The chart at right shows Archi-Technology's consulting services based on project phase. For more information, please visit the [healthcare services page](#) of our website.

**Moving data to heal bodies, minds and spirits.**

Arch-Technology LLC specializes in the physical infrastructure that moves data through buildings and campuses, as well as the facility-based, IP-connected technology systems they connect including:

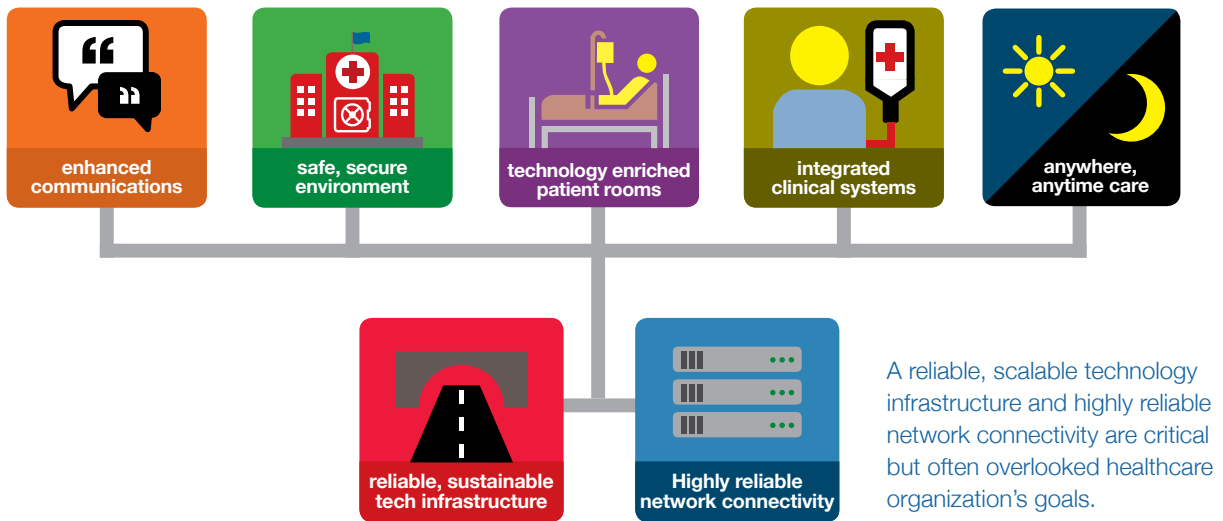
- **Infrastructure:** Pathways, Spaces and Structured Cabling, and Communication Equipment Rooms (CERs)
- **Communication Systems:** Voice and Data Systems, Peer-to-Peer Communications, and Real-Time Location Systems (RTLs)
- **Distributed Audio-Video Systems:** Public Address (PA), Cable Television (CATV) and Synchronized Clocks
- **Integrated Audio-Video Systems:** Patient Entertainment/Education Systems, Conference Rooms and Auditoriums
- **Security Systems:** Video Surveillance, Access Control, Intrusion Alarm and Patient Elopement Protection
- **Clinical Systems:** Patient Monitoring, Nurse Call, Operating Room (OR) and Sterilization Process Department Workflows, and OR Technology Systems



## Helping healthcare organizations shape technology to meet their goals

Most healthcare organizations share the same goals including improving patient outcomes, eliminating re-admissions, and establishing safe, secure hospitals and clinics. These and other goals are accomplished, in large part, through technology systems.

But new IP-connected systems and devices won't meet organizational goals if a **reliable, sustainable technology infrastructure** is not in place. This key component to a healthcare facility's technological success is often overlooked or has evolved from an assortment of small projects, leaving new system investments at risk of under-performance.



## Fundamentally improving how technology is planned, implemented and maintained in hospitals and healthcare facilities throughout Western and Central New York State.

Archi-Technology specializes in the infrastructure that moves data through buildings and campuses to ensure that all technology systems and devices operate as expected from the start, to meet related healthcare goals.

We act as an extension of your staff, as needed, taking a strategic, unbiased interdisciplinary approach to looking after your patients' and your organization's best interests.

With more than 20 years experience in healthcare facilities, we have the knowledge and tenacity to overcome your biggest technology challenges.

For more information, please visit the [healthcare services page](#) of our website or call **585.286.4500** to discuss your specific needs.



**Archi-Technology**  
Technology Consultants LLC

Connecting People, Technology & Buildings

[www.Archi-Technology.com](http://www.Archi-Technology.com)

1160-J Pittsford-Victor Road, Pittsford, NY 14623 585.424.1952